

# \$2.5M – \$3M Convertible Debenture Ready to EXECUTE Multiple Markets Exceeding \$500 billion by 2030

**Sleep**

**Nutrition**

**Activity**

**Peer Support**

**Ingeni Health** is an **AI EVIDENCE-BASED SOLUTION** integrating user health goals, proven sensors, and lab data to **recommend a personalized plan "SNAP" for your family & friends "Peers"** with **best practices, nutrition, and supplements**. Continuously analyzed and monitoring of trends to improve the health journey!

Our "Family First" evidence-based plans:

1. Strengthen longevity trends and quality
2. Healthier habits and mental health for children
3. Empower seniors and destress caregivers

## Addressing Health Concerns - Maximizing Revenues



Sleep Quality



Energy Levels



Nutrition



Your Weight



Cardiovascular Health



Mental Health



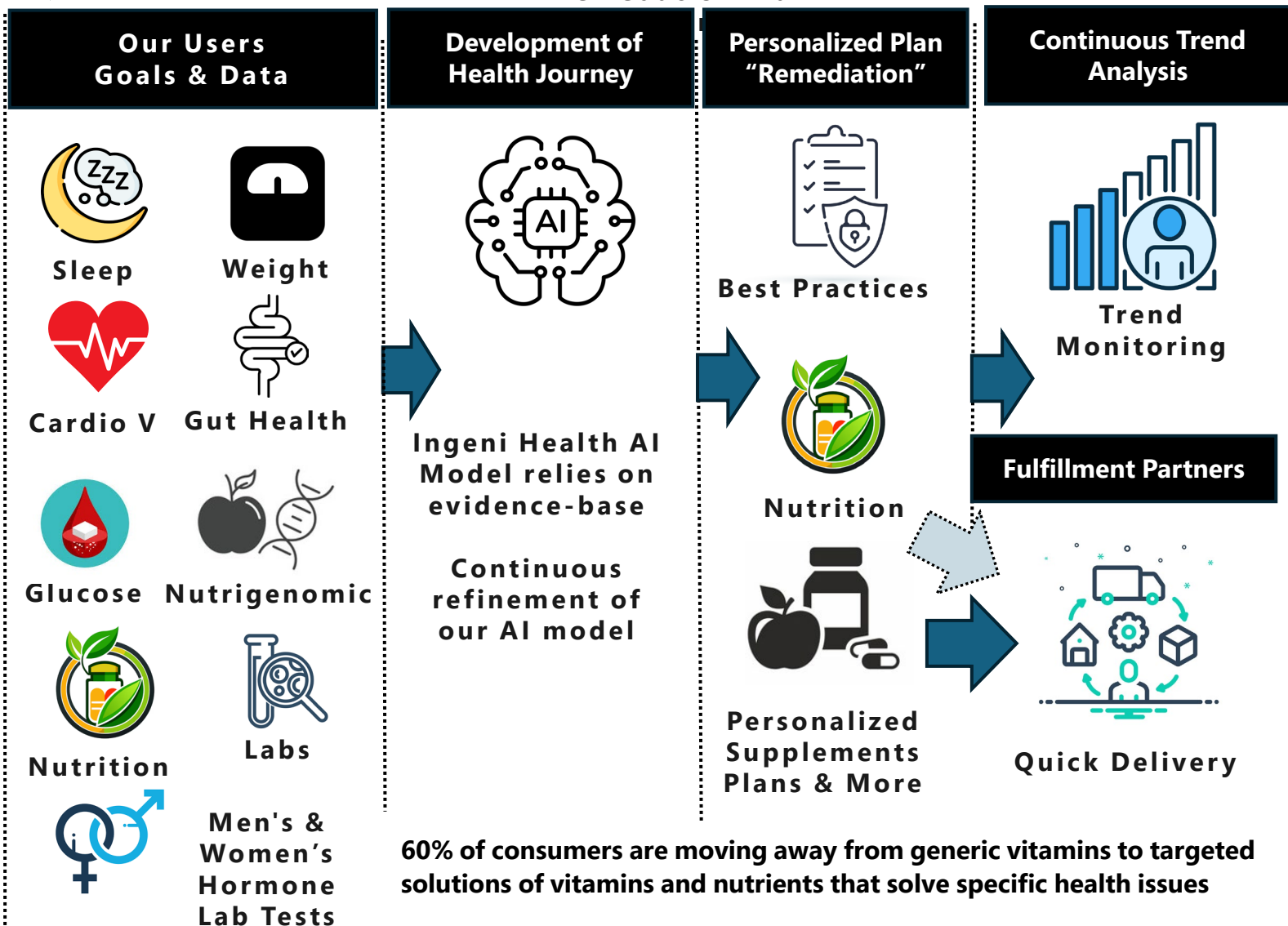
Glucose Patterns



Men's & Women's Health

## How our Solution Works Using AI, Mobile Apps & Cloud Services

Based on trends from data, Ingeni Health updates User SNAP Profile with an adjusted Remediation Plan



According to a survey of people aged 50-64 years, **50%** endorsed interest in genetic testing for estimation of disease risk (**58.9%**), and informing medical care (**53.8%**).

# Who is Ingeni Health?

- Pre-seed Investment Currently more than \$1.2M
- Metabolic Health App (Beta) December 2024
  - Supporting FDA devices used by health professionals
  - Lab Partners for Gut Health, Genetics and other Test Kits
- Strategic Partner for Insurance Payers for Corporate Health Plans
- Patent Strategy Team with expertise in Metabolic and Seniors Health

**Ian McNeill**  
CEO, Founder



## Business Model & Revenue Streams



## Impact on The Family and Caregivers

Mothers and daughters are responsible for 80% of health decisions for their nuclear family including aging parents in other locations.



- 88% of U.S. Adults may have Metabolic and Health concerns which could lead to financial, economic and quality of life risks.
- The "Sandwich Generation" of parents aged 30's to 50's responsible for caring for children and Aging Parents @HOME is 67 million.

- 43% of U.S. Adults are obese. The children model lifestyle choices of parents.
- The CDC estimates 1 in 5 children, 12 – 18 years of age, are diagnosed with pre-diabetes

## Impact on Corporate America's Wellness Programs

Working with our partners Ingeni Health will support, Insurance Payers, Health Spending Account (HSA) & Flexible Spending Account (FSA) requirements.



**Lower Healthcare Costs**



**Promote Family Health**



**Reduce Stress  
Improve Mental Health**



**Increased Productivity**

[Visit Us](#)

[www.invest.ingenihealth.com](http://www.invest.ingenihealth.com)

[Market Research & Valuation Available](#)

**Ingeni Health** [Ian.McNeill@IngeniHealth.com](mailto:Ian.McNeill@IngeniHealth.com)